





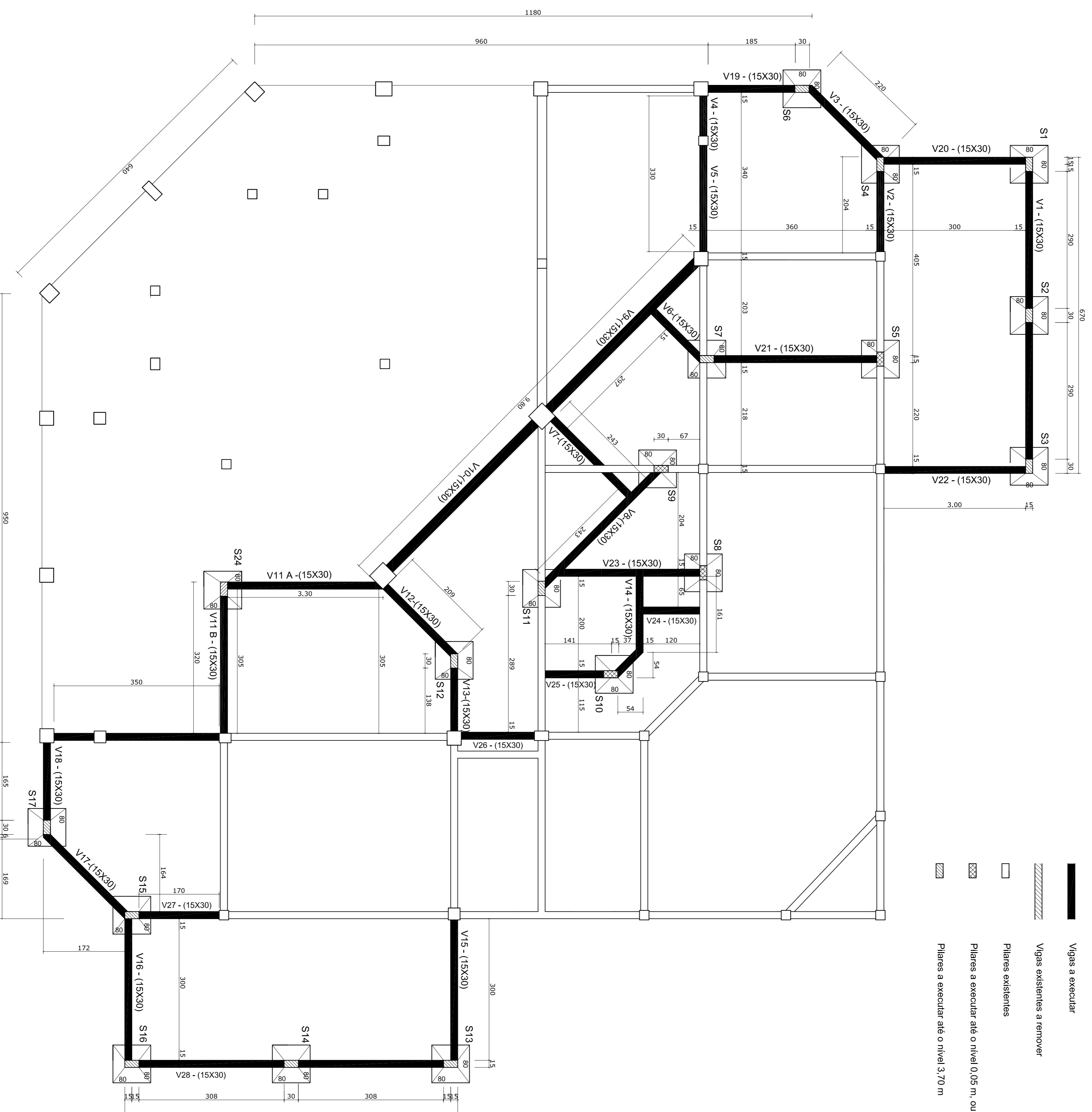
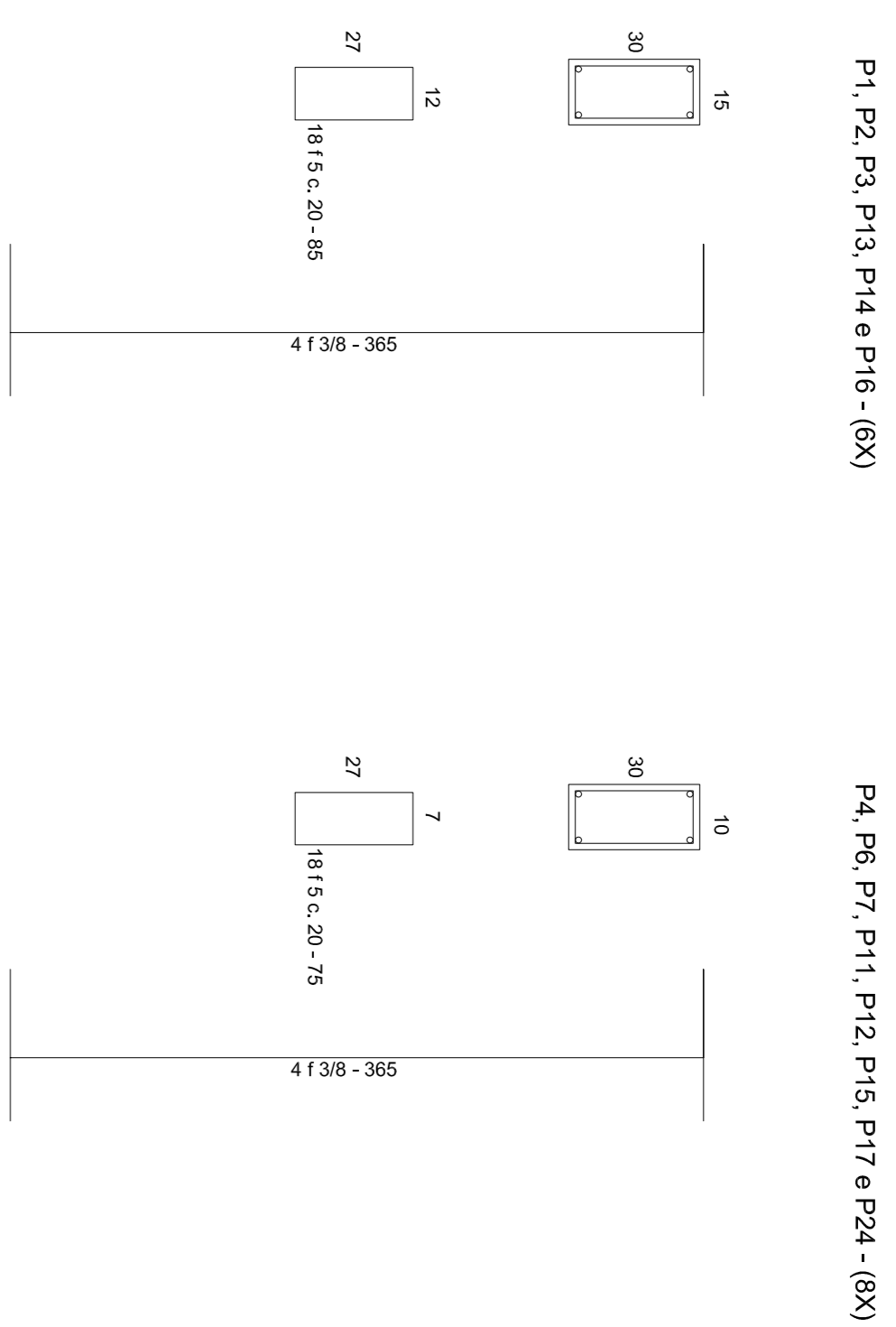


### LEGENDA

-  Vigas a existentes
-  Vigas a executar
-  Vigas existentes a remover
-  Pilares existentes
-  Pilares a executar até o nível 0,05 m, ou 1,95 m
-  Pilares a executar até o nível 3,70 m

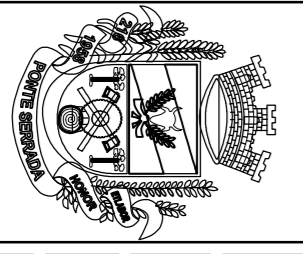
### PILARES



## ESTRUTURAL

ESTADO DE SANTA CATARINA

PREFEITURA MUNICIPAL DE PONTE SERRADA

		Engenharia civil ORCA - 11.810 - 3/SC ALTAIR FAZOLLO
RUA RODOZINHO PAVANI, 170 - PONTE SERRADA - SC (049 - 34350014)		
Tipo Ampliação do Centro Municipal de Comercialização de Produtos da Agricultura Familiar	Escalas INDICADAS Data Maio de 2013	Área: Pavimento terra: 281,00 m² Subsolo: 345,27 m² Total: 626,27 m²
Desenho Maurício Renan Mendes	Assinatura Eduardo Capelli	Franquia <b>ES - 02</b>
Local PONTE SERRADA - SC	Proprietário Prefeitura Municipal de Ponte Serrada	

## PLANTA FORMAS VIGAS - NÍVEIS 0,00 E 0,05 E LOCAÇÃO DAS SAPATAS

ESCA:.....1:50